

CIRQUE DU SOLEIL

ALIZÉ™



PRESS KIT

A JOURNEY INTO THE INVISIBLE

“ALIZÉ is a breath
of wind that carries
our dreams into
the unknown.”

Fabrice Becker
VICE PRESIDENT OF CREATION

“The magic of ALIZÉ is not
about illusions. It’s about
the wonder behind what
we don’t yet see.”

Valentine Losseau and Raphaël Navarro
DIRECTORS, AUTHORS, MAGIC DESIGNERS,
INVISIBILITY SYSTEM DESIGNERS

“ALIZÉ is a door in
the air: step through.”

Émilie Émiroglou
DIRECTOR OF CREATION



ABOUT THE SHOW

Cirque du Soleil's first European resident show is a never-before-seen fusion of two art forms.

In Cirque du Soleil ALIZÉ, unique acrobatic innovations combine with the techniques of Magie Nouvelle to become an entirely new artistic language.

The circus arts push against the boundaries of the possible and magnify visible performances with astonishing feats. Magic works invisibly to weave inexplicable marvels that ignite the imagination. Fusing them, Acromagic is a whole new doorway to wonder.

Presented and co-produced by Live Nation, ALIZÉ was created especially for the Theater am Potsdamer Platz

in Berlin. Through its acrobatic feats and marvels of invisibility, levitation and holographic technologies, ALIZÉ transforms the theatre into a surreal, poetic universe that dissolves the boundary between the real and surreal to envelop the audience.

Touching on themes of resilience, transformation, and the beauty of life's fleeting moments, ALIZÉ is an immersive, poetic exploration of interconnection and the sublime that reveals itself if we are open to it.



FIRST EUROPEAN RESIDENCY

For over 30 years, Cirque du Soleil has captivated audiences across Germany with its visionary productions.

It all began in 1995 with the debut of Saltimbanco in Berlin—a milestone that sparked a nationwide fascination. Since then, Cirque du Soleil has toured Germany 132 times, enchanting millions with 16 breathtaking shows. Now a bold new chapter unfolds:

Cirque du Soleil ALIZÉ, the first-ever resident Cirque du Soleil production on European soil. As the 22nd resident show worldwide and the 54th original production, ALIZÉ marks a defining moment in the history of Cirque du Soleil.



“We are very excited to introduce Cirque du Soleil ALIZÉ, our first European resident show. Fusing magic and circus arts allowed us to explore new dimensions and push the limits of creation. This is a new way for Cirque du Soleil to imagine artistic entertainment. It’s been an inspiring process to create a true one-of-a-kind experience for our audience”

Daniel Lamarre,
Executive Vice-Chairman
of the Board, Cirque du Soleil

“Cirque du Soleil has always opened up new perspectives and created spaces for imagination, dreams, and desires. Live Nation is especially proud of this groundbreaking co-production, Cirque du Soleil’s first European residency in Berlin at the Theater am Potsdamer Platz. Together, we present the world premiere of ALIZÉ, a unique, groundbreaking event that will thrill and inspire audiences beyond measure”

Marek Lieberberg,
CEO, Live Nation GSA

THE CONCEPT

A wind rises. A dream begins. Cirque du Soleil ALIZÉ takes you where the invisible becomes visible.

ALIZÉ is the story of a quiet dreamer swept by a sudden gust of wind into strange, shifting worlds where imagination leads the way and nothing is what it seems.

It's a journey through moments of doubt, wonder, and discovery, full of characters who challenge him, help him grow, and reveal parts of himself: the realist, the artist, the wanderer.

Through imagination and emotion, ALIZÉ explores what drives us, what holds us back, and what happens when we open ourselves to change. It reminds us that when we stay connected—to ourselves, to others, to the world—life becomes extraordinary.



ACROMAGIC

Acromagic is the result of more than 20 years of exploration by show creators Valentine Losseau and Raphael Navarro, the pioneers of Magie Nouvelle. With Cirque du Soleil ALIZÉ, they have combined the techniques they innovated and refined with Cirque du Soleil's astonishing acrobatics, building the show on the

pillars of invisibility, levitation, and holographic technology. The result is a poetic expression of Acromagic that will leave audiences in Berlin wondering about the line between the real and the imagined.

MEET SOME OF ALIZÉ'S CHARACTERS



ALIZÉ

DREAMY, INTROSPECTIVE TEENAGER

Quiet, curious, drawn to the mysterious – where others see the ordinary, Alizé senses magic. Swept into worlds between the real and surreal, he embarks upon a journey of awakening, eventually discovering inner strength and the magic within.



AIR

BRIDGE TO THE INVISIBLE

As Alizé's guide through magical worlds, Air leads by presence, intuition, and trust. She understands that transformation comes not from certainty, but through courage. Because of this, she doesn't show Alizé his power. She invites him to take risks, to rise, and to open his heart to the unknown. She helps him feel his power through acts of courage.



FÉLIX

INTROVERTED SURREALIST

Félix longs to fit in – not an easy thing for someone who tends to keep to himself. But he's a surrealist at heart, and when he steps into the invisible, he begins a journey of self-acceptance and finds within himself a strength he never suspected.



ARIEL & CÉLESTE

BOUND BY LOVE, DIVIDED BY THE WIND

Ariel is practical. Céleste is a dreamer. When a sudden tornado tears them apart, their search for each other becomes a tightrope walk between stability and freedom. Can Ariel learn to let go and trust the unknown? Will Céleste find the strength to bring her dreams to earth? Only balance can bring them together again.



AIGRETTE

THE DANDELION LADY

What tune does the musician of the unseen play on her harp? The notes that Aigrette plucks shimmer like dandelion seeds in the wind – this is the sound of magic, memory, and hope, a soft song with the power to guide you toward the light.



ÉOLE

SPIRIT OF THE WINDS

Éole is the voice of the elements, and her song gives shape to the world. She can summon the fury of a tempest or still the stormy sky. Fierce, tender, alive – nature in all its moods sings through her, reminding us that power and peace can be carried by the same wind.

THE ACTS





PROLOGUE & BEDROOM

Félix wanders through the audience looking for his seat, then wanders on stage. Suddenly a voice fills the theatre. This is Éole – voice of the wind. As she welcomes the audience and delivers the theater's safety rules, Félix mimes them with innocent sincerity.

Enter Éole. She unveils the dreamy, whimsical world of Alizé's bedroom. An unfamiliar energy begins to stir: a gentle breeze that builds into a sudden gust that flings the window wide open and carries off Alizé's precious dandelion seed. The atmosphere crackles with a presence – something unseen yet electric. Then, in a single moment, Alizé's world is torn in two. The bedroom splits apart, reality begins to shift. Drawn by the force of the unknown, Alizé leaps into the magic, vanishing into a world beyond on a quest to recover his seed.

THE PARK

CLOWN, CHAIRS, BMX, HAND TO HAND, ACRO POLE

The world shifts with dreamlike magic and Alizé finds himself in a vibrant, enchanted park bursting with movement, color, and wonder. All around, people dance and play. Drawn forward by curiosity, Alizé weaves through the crowd, chasing something just out of reach.



THE WIND RISES

SPIN TABLE HANDSTAND

While Alizé struggles to control the magic within, Carpo performs a handstand on a spinning table atop the fountain from which he watched the festive scene unfold. As Éole's song grows stronger, a tornado rises, driving Ariel and Céleste apart. Separated, the couple must now find their way back to each other.



THE DANCE OF WINDS

STRAPS, BUNGEE

Within the tornado, Zéphyr begins to spin, calming the tempestuous Éole. Together, they perform a duet above the audience while other artists personifying the wind drop from the rafters of the theater to partake in an aerial ballet.

THE MAGIC BOX

Alizé steps into a realm of shadows and silence. Céleste and Félix follow, eyes wide with wonder. Time feels suspended here. Three luminous doors appear, each one whispering a different promise, a different path. One by one, they make their choice. Alizé reaches a door, steps through. Céleste does the same with another door, but Félix hesitates. The doors suddenly transform into boxes.

THE KIDNAPPING

PUPPETRY, CLOWN

Three puppets collectively called The Meanings parade onto the stage, each carrying the world behind one of the three doors. The three of them enter a clownish struggle.



PAREIDOLIA

CONTORTION

This iconic number takes on a fantastical twist as Alizé enters a world of invisibility and wonder. Not only do four Volutes perform astonishing contortions, they teleport and fade in and out of sight while doing them. Alizé, drawn into their physicality, echoes their dance. But then, in an awe-inspiring instant, the Volutes vanish before our eyes.



ASTERIOS AND THE NIGHT FALL

ACROMAGIC, JUGGLING

Night falls softly. Asterios, Guardian of the Fireflies, steps on stage and begins to juggle, each throw leaving trails of light. She makes two facing cliffs appear and fills the sky with fireflies that bridge the gap between cliffs. Alizé, hesitant to cross the bridge of light, is encouraged by Air. Once across, he rises, then soars weightless, only to fall and disappear into the unknown.



THE CROSSING

HIGH WIRE

With fireflies following closely behind, the Butterfly Tamer begins a courageous crossing high overhead. Eager to connect, Alizé approaches. The Butterfly Tamer, balanced delicately between power and control, offers Alizé a magical talisman in the form of a fan.



THE LIBERATION

PUPPETRY, CLOWN

The Meanings are back! In a physical clown act, Félix escapes. He makes his getaway unnoticed, but his limbs flail as he stretches comically and tries to shake off the stiffness in his arms and legs.

THE KALEIDOSCOPE

TRAMPO WALL

The landscape transforms around Félix into a shimmering palace of mirrors. Magical doubles of him wait. They leap weightlessly, multiplying endlessly in reflections, a mesmerizing acrobatic ballet that blurs reality. This dizzying moment gives Félix the impulse to embrace every version of himself.





CATCH ME IF YOU CAN

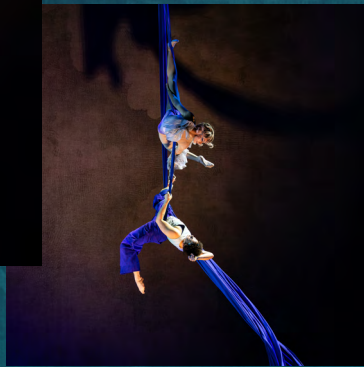
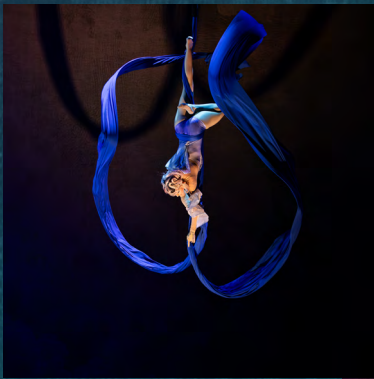
ACRO-LADDER

The Whisperer enters with his ladder. He climbs toward a firefly at the top. Alizé watches, transfixed. At the very top of the ladder, the Whisperer plucks the firefly from the sky and gives it to Alizé. Now Alizé understands: to truly awaken his powers, he must embrace the light of magic.

THE RETROUVAILLES

LEVITATION, ADAGIO

With the power to bring Ariel and Céleste back together now in his hands, Alizé acts. Using his magical fan and the light of magic, Alizé shifts the world around him. Ariel and Céleste, reunited, perform a weightless, ethereal dance, floating in perfect harmony.



WHISPERS OF THE WIND

AERIAL SILK

Éole performs an aerial silk act hyped up by synchronized video effects. Alizé returns and is mesmerized by what is happening on-stage. Inspired and caught in the moment, Éole and Alizé perform a beautiful aerial duet.

REALITY

PLANQUINE

With Alizé having fully embraced his magic and retrieved their dandelion seed, the Tutti gather in a whirlwind of energy to celebrate their transformation. As the planquine number ignites, Alizé steps forward. In an electrifying moment, all the characters come together, their converging paths coming to life in a powerful crescendo. The air crackles with the energy of resolution, signaling the triumph of Alizé's journey and his gift of magic to the world.



FUN FACTS

- There are **43 artists** in the cast of Cirque du Soleil ALIZÉ representing **21 countries**, speaking **15 different languages**
- The creation of Cirque du Soleil ALIZÉ began in **November 2023**
- The Trampowall weighs **12 tonnes**
- There are a total of **172 dandelions** in the show
- When the theatre was renovated, Cirque du Soleil kept a piece of the original stage, turning it into a beautiful and inspiring table for the theater's conference room.
- The most important element of the show is something nobody will ever see!

SET DESIGN

In the heart of Berlin's Theatre am Potsdamer Platz, Cirque du Soleil ALIZÉ unfolds within a world that defies the boundaries of perception. The set design is a portal — an invitation to step beyond the visible and into a realm where reality fractures, magic pulses beneath the surface, and the unseen becomes tangible.

Through its layered design and shifting atmospheres, the set of ALIZÉ evokes three core sensations: beauty, intrigue, and mystery. As the show unfolds, the audience is not merely watching — they're crossing into a space where the visible dissolves and the invisible takes center stage.

Concept & Ideology

The creative vision behind Cirque du Soleil ALIZÉ's set design stems from a desire to blur the boundaries between the real and the surreal. Inspired by the tension between the familiar and the fantastical, the design invites viewers into a space where beauty, mystery, and intrigue reign. It's a world in flux where imagination reshapes reality.

Immersive Integration

The set design fully inhabits the Theatre am Potsdamer Platz, reshaping it into a vessel for transformation. Through seamless integration of physical elements and video landscapes, the stage becomes a living canvas — shifting between dimensions, revealing hidden layers, and guiding the audience through a journey that feels both intimate and infinite.

Two Signature Set Pieces

- **The Life-Size Tree:** Cast from a real trunk and hand-carved down to its roots, this vibrant autumnal tree anchors a series of scenes that explore memory, time, and the invisible forces that shape us.
- **The Floating Bedroom:** A surreal vignette of domesticity suspended in space, this set piece offers a poignant glimpse into the real world before the journey into the surreal begins. Its walls are adorned with bespoke artwork — fragments of forgotten stories, echoes of other worlds — creating a sanctuary that feels both personal and uncanny.

Architectural Highlights

Dominating the stage is a bespoke proscenium arch, sculpted to resemble the ruins of a forgotten theatre — an echo of reality overtaken not by nature, but by time, memory, and imagination. Weathered columns sprout twisted branches and strange trees, forming a living sculpture that evolves throughout the show. This immersive structure doesn't merely frame the stage — it envelops the entire auditorium, transforming the Theatre am Potsdamer Platz into a mythical environment that feels both ancient and alive.



THE COSTUMES

Costume design for Cirque du Soleil ALIZÉ is all about balance between reality and magic as the audience follow real world characters traveling into a magical universe, guided by powerful figures embodying natural elements. The challenge is to evoke wind, dandelions, butterflies, constellations, or smoke without being too literal, while always keeping the human side of the characters.

The costumes of the real-world characters would evoke the magical world by sharing patterns, shapes or colors with their mystical counterparts. The Costume Designer drew inspiration from paintings, especially the depth of the color ultramarine blue, which became a central color in the overall palette. Designing for circus is always walking on a delicate line to create costumes technically suited for high-level acrobatics, yet carrying a strong, contemporary visual identity.

There is no main fabric used across the show as each costume requires specific technical and visual properties. Many pieces use durable stretch materials tested for comfort and the demands of hundreds of performances and daily washes. Techniques like sublimation and screen printing are used to create rich visual textures that trick the eye. Velvet was chosen to offer richer and deeper colors under stage lighting. More specific fabrics such as feather silk, the world's lightest fabric, is used to create the flowy hair effect on Celeste's headpiece. We also explored the ultra-extensibility of a fabric called crapoté, a double layered fabric with a smocking effect, for Alizé's contortion act. The other specific and most expensive fabric we use is the one you don't see. It is a very high light-absorbing velvet called Musou.



Aigrette Costume

The Aigrette costume (singer and harpist) is our masterpiece, requiring the expertise of many departments including costumes, props, millinery and magic. Many other pieces integrate lighting technology and a tracker system, demanding close collaboration between creative and technical teams to ensure both design integrity and performer safety.

THE MAKE-UP

Theater teaches to imagine stories for every figure. Makeup, like costume, is a voice in that narrative. Sometimes it comes from the words of a director, sometimes from a secret tale invented to uncover who hides behind the mask. Transformation guides the designer's hand: from realism, to heightened theatricality, to the shimmer of pure magic.

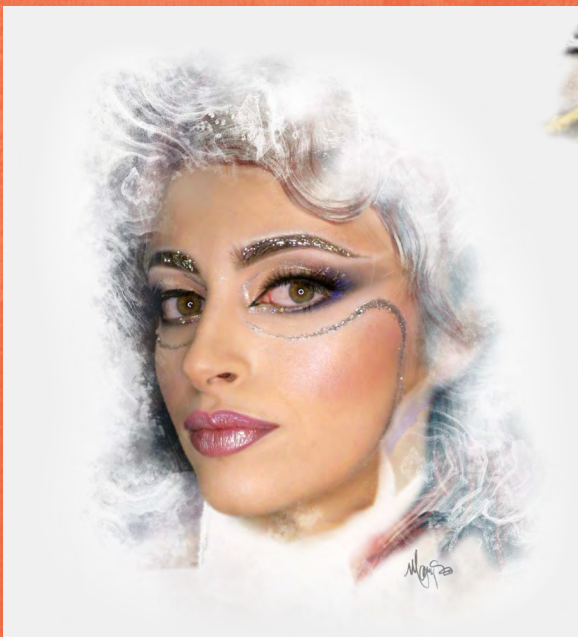
Costume and makeup must breathe as one. The costume lays the foundation, and makeup completes the vision. Together, they tell a single story that holds the spectator's gaze. In Cirque du Soleil ALIZÉ, some characters—imbued with a deeper sense of magic—evoked entire worlds through their presence.

Although new makeup technologies offer dazzling shimmers and reflections, the make-up designer of ALIZÉ chose to remain largely with matte textures, ensuring colors retained their depth and could reach even the second balcony.

The overall palette was shaped by cooler tones, especially blues, with shimmering highlights and golden touches for select characters. Guided by the idea of transformation, seasonal shifts in color and the changing light from morning to night were explored for the designs. In this, makeup had to hold its own against the costume: tonal values needed to be just as strong, so that both elements could be illuminated in harmony on stage.

Butterfly Tamer Make-up

One of the most delicate creations of makeup in the show is the Butterfly Tamer. The act is so fragile and perilous that the audience often holds its breath. The Designers imagined that, in the journey, the Butterfly Tamer must have fallen many times — like the fractures of a life lived on the wire. Each time, he rises again, mended by butterflies, the spirit of kintsugi, the Japanese art of repairing ceramics with gold. Ultimately, special foil transfer paper was used to create those broken scars.



Tutti Make-up

For the group named the tutties, a specialized graphic eyeliner was designed that introduced a contemporary touch, with custom pieces cut to perfectly adapt each acrobat's eye structure.

The Winds Make-up

For the Winds, the language of the makeup is lines and the curve, enriched with tonal variations and glittered details in light.

ABOUT THE THEATER AM POTSDAMER PLATZ

The Theater am Potsdamer Platz is one of Germany's most renowned show venues, located in the heart of Berlin. Designed by the acclaimed architect Renzo Piano, it opened in 1999 and offers seating for around 1,800 guests. The venue is distinguished by its modern architecture, excellent acoustics, and flexible stage technology. In addition to hosting numerous international

productions, it regularly serves as a venue for the Berlin International Film Festival (Berlinale) and is regarded as a cultural hotspot of the German capital. With the premiere of Cirque du Soleil ALIZÉ in autumn 2025, the theatre will become home to the first Cirque du Soleil residency in Europe, establishing itself as a stage for world-class international productions.



CIRQUE DU SOLEIL ENTERTAINMENT GROUP

FEEL THE INSPIRATION

Originally composed of 20 street performers in 1984, Cirque du Soleil Entertainment Group completely reinvented circus arts and went on to become a world leader in live entertainment. Established in Montreal, the Canadian organization has brought wonder and delight to millions of spectators worldwide.

Cirque du Soleil Entertainment Group currently has almost 4,000 employees including 1,000 artists, comprised of nearly 80 different nationalities.

Cirque du Soleil Entertainment Group creates content for a broad range of audacious projects. In addition to producing world-renowned shows, the organization has extended its creative approach to various entertainment forms such as multimedia productions, immersive experiences, theme parks and special events. Going beyond its various creations, Cirque du Soleil Entertainment Group aims to make a positive impact on people, communities and the planet with its most important tools: creativity and art.

LIVE NATION ENTERTAINMENT

Live Nation Entertainment is the world's leading live entertainment and eCommerce company, comprised of four market leaders: Ticketmaster.com, Live Nation Concerts, Front Line Management Group, and Live Nation Network. Ticketmaster.com is the global leader in ticketing and one of the top five eCommerce websites, with more than 26 million unique monthly visitors.

Live Nation Concerts produces over 20,000 shows annually for more than 2,000 artists.

Front Line Artist Nation is the world's leading artist management company, representing more than 250 artists. Together, these businesses power Live Nation Network, the leading provider of entertainment marketing solutions, serving over 800 advertising clients and offering access to 200 million consumers annually through Live Nation events and digital platforms.



CREATIVE TEAM



Valentine Losseau & Raphaël Navarro

DIRECTORS, AUTHORS, MAGIC DESIGNERS,
INVISIBILITY SYSTEM DESIGNERS: COMPAGNIE 14:20

Valentine Losseau is a groundbreaking French director, magician, and anthropologist known for her innovative approach to storytelling and stagecraft. Her work harmoniously blends illusion with anthropological insight resulting in creations that draw audiences into unforgettable, transformative experiences.

Raphaël Navarro is a celebrated French director and magician. He's been widely acknowledged for the unique and moving artistry of a body of work that blurs the line between illusion and reality.

Together, Losseau and Navarro have revolutionized magic as co-creators and directors, founding the Magie Nouvelle art movement and establishing it as an internationally recognized artistic discipline. With two decades of artistic creation and more than 50 shows and exhibitions to their credit, they have left their mark on theater, circus, dance, and opera.

Sharing a commitment to innovation, they continue push the limits of magic and theater, crafting unique narratives that blend wonder with profound human connection. Their visionary approach keeps expanding the boundaries of live performance, inspiring an ever-growing global community of artists and dreamers.



Émilie Émiroglou

DIRECTOR OF CREATION

Director of Creation, acrobatic designer, and artistic director, Émilie Émiroglou has been working in the circus and performing arts for over 25 years. At the age of 10, she began her professional training at the National Circus School in Montreal where she developed an aerial hoop act. She joined Cirque du Soleil for the creation of the show, *Quidam*. Wishing to deepen her knowledge and enrich her experience as a performing artist, she then enrolled in a bachelor's degree program at the École supérieure de théâtre de l'UQAM. She participated in various theatrical productions before returning to the circus for shows such as *Rain* (Cirque Éloïze) and *Corteo* (Cirque du Soleil).

Her experience as a circus artist naturally led her to acrobatic design and artistic direction in circus and since, has collaborated on a variety of special events with Cirque du Soleil. She was the Director of creation for the global supermodel collaboration of *Halloween of Heidi Klum x Cirque du Soleil* in 2023 and Cirque du Soleil's summer presentation of *The Cirque* in Trois-Rivières, as well as the Assistant Show Director and Acrobatic Designer for *Tout écartillé*.





Marion Motin
ASSOCIATE DIRECTOR
& CHOREOGRAPHER



Chloe Lamford
SET DESIGNER



Lizzie Frankl
PROPS DESIGNER



Sébastien Dionne
COSTUME DESIGNER



Johanna Ehlert
PUPPETS DESIGNER



Philippe Brault
COMPOSER



Raphaël Reed
COMPOSER



Martin Labrecque
LIGHTING DESIGNER



Nicolas Descoteaux
LIGHTING DESIGNER



Félix Fradet-Faguy
PROJECTION DESIGNER



Jean-Michel Caron
SOUND DESIGNER



H el ene Lemay
ACROBATIC
CHOREOGRAPHER



Emilie Therrien
ACROBATIC
PERFORMANCE
DESIGNER



J er ome LeBaut
ACROBATIC
PERFORMANCE
DESIGNER



Pierre Masse
ACROBATIC EQUIPMENT
DESIGNER



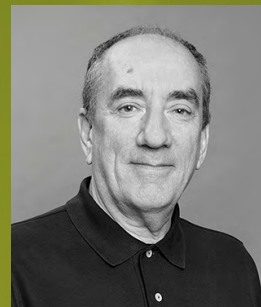
Ewen Seagel
ACROBATIC EQUIPMENT
DESIGNER



Maryse Gosselin
MAKE-UP DESIGNER



Simon L. Lachance
TECHNICAL DIRECTOR



Martin Dignard
LINE PRODUCER



Anastasia Kitsos
PRODUCTION DIRECTOR



Fabrice Becker
VICE PRESIDENT
CREATION



Matthew Whelan
VICE PRESIDENT
PRODUCTION AND
EXECUTIVE PRODUCER

CAST CREDITS



Andre Augustus
PLANQUINE - TUTTI
Australia



Benton Adams-Walker
PLANQUINE -
TUTTI RESERVIST
Australia



Aminaa Bayartsaikhan
CONTORTION -
LES VOLUTES
Mongolia



Delaney Bayles
JUGGLING -
ASTERIOS
United States
of America



Rachael Boyd
PLANQUINE - TUTTI
Australia



Louise Brownsey
TRAMPO WALL -
FÉLIX DOUBLES
England



Othgo Chuluunzorig
CONTORTION -
LES VOLUTES
Mongolia



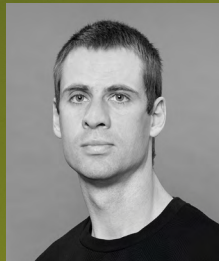
Sarah Cooper
TRAMPO WALL -
FÉLIX DOUBLES
United States
of America



Benji Courtenay
AERIAL STRAPS
DUO - ZÉPHYR
Canada



Ines Faria
PLANQUINE - TUTTI
Portugal



Sergey Fomin
PLANQUINE - TUTTI
Russia



Gonzalo Gazzola
PLANQUINE - TUTTI
Argentina



Lotta Hagfors
SINGER - ÉOLE
Finland



Mohamed Hamouch
PLANQUINE - TUTTI
Morocco



Joe Hill
PLANQUINE - TUTTI
England



Takahiro Imoto
TRAMPO WALL -
FÉLIX DOUBLES
Japan



Kaoru Kondo
TRAMPO WALL -
FÉLIX DOUBLES
Japan



Eduardo Leite
TRAMPO WALL -
FÉLIX DOUBLES
Brazil



Isabella Majzun
MANIPULATION
- ALEA
United States
of America



Leela Masuret
AERIAL STRAPS
DUO/FABRIC - AIR
United States
of America



Eve Matin
SINGER & HARPIS
T - AIGRETTE
Perú



Kirill Matushkin
PLANQUINE – TUTTI
Russia



Victor Maximo Versuth
TRAMPO WALL – FÉLIX DOUBLES
Brazil



Harley McLeish
MAGIC ADAGIO/
HAND TO HAND
– ARIEL
Australia



Vova Mikhailin
PLANQUINE – TUTTI
Russia



Nicolas Montes De Oca
SPIN TABLE – CARPO
Mexico



Nyamka
CONTORTION – LES VOLUTES
Mongolia



Misheel Nyamkhuu
CONTORTION – LES VOLUTES
Mongolia



Franco Peli
MURPHY
Argentina



Slava Pereviazko
ACRO LADDER – THE WHISPERER
Ukraine



Rambo
TRAMPO WALL – FÉLIX DOUBLES
Chile



Samuel Renaud
PLANQUINE – TUTTI
Canada



Alexandre Saint-Jacques
TRAMPO WALL – FÉLIX DOUBLES
Canada



Aleksandr Samoilov
PLANQUINE – TUTTI
Russia



Christian Shaw
TRAMPO WALL – FÉLIX DOUBLES
United States of America



Artur Shekhel
PLANQUINE – TUTTI
Russia



Asom Snow
PLANQUINE – TUTTI
United States of America



Kate Sudnikova
SPIN TABLE
RESERVIST
Belarus



Pierric Tenthorey
CLOWN/ MAGIC – FÉLIX
Switzerland



Laurence Tremblay-Vu
HIGH WIRE – THE BUTTERFLY TAMER
Canada



Charlotte Van Royen
PLANQUINE – TUTTI
Belgium



Amber Van Wijk
MAGIC ADAGIO/
HAND TO HAND – CÉLESTE
Belgium



Silvia Vrskova
BUNGEE – WIND
Slovakia



Saffi Watson
ACRO MOVEMENT – ALIZÉ
United States of America



Nao Yoshida
FLATLAND BMX – BREEZE
Japan





📷 @alize.cirquedusoleil

📘 alize.berlin

📺 @CirqueduSoleilAlizé

🎵 cirquedusoleil

📷 @cirquedusoleil 📷 @livenationgsa



CIRQUE DU SOLEIL

LIVE NATION